



## East Court Guiding Centenary Nature Trail



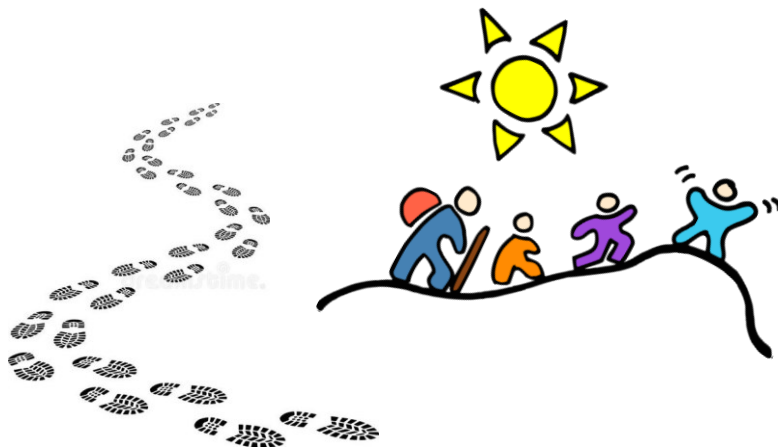
Welcome to the East Court Guiding Centenary Nature Trail ! The trail is free for anyone to use and is approximately one mile long. It was set up by East Grinstead Girl Guides to celebrate the Centenary of the founding of the Guide movement in 1910.

There are 16 posts placed around the grounds of East Court & in Ashplats Wood, situated near paths. Each post is topped by a brass plaque depicting birds, flowers, animals and local places of interest.

Why not collect a bag of paper and crayons from the Council office at East Court or the Tourist Office in East Grinstead Library and 'brass rub' the images, so that you can take them home. You may even be lucky enough to spot some of the flowers or creatures depicted on the plaques as you walk round.

The first post is on the Meridian Line, which passes through the grounds of East Court mansion. This is an opportunity for you to stand in both the Eastern and Western Hemispheres at the same time.

Please use the Trail as often and however you like. Enjoy yourselves and have fun !



### Would you like to take part in Guiding ?

You can join:

**Rainbows** are aged 5 - 7

They have fun, playing games and making things.

**Brownies** are aged 7 - 10

Brownie meetings are full of challenges, games and activities - usually those suggested by the Brownies themselves.

**Guides** are aged 10 - 14

Guiding encourages girls to develop by trying new experiences, undertaking challenges and enjoying activities with their friends.

**Rangers** are aged 14 - 18


Rangers are all about taking the lead and finding new challenges.

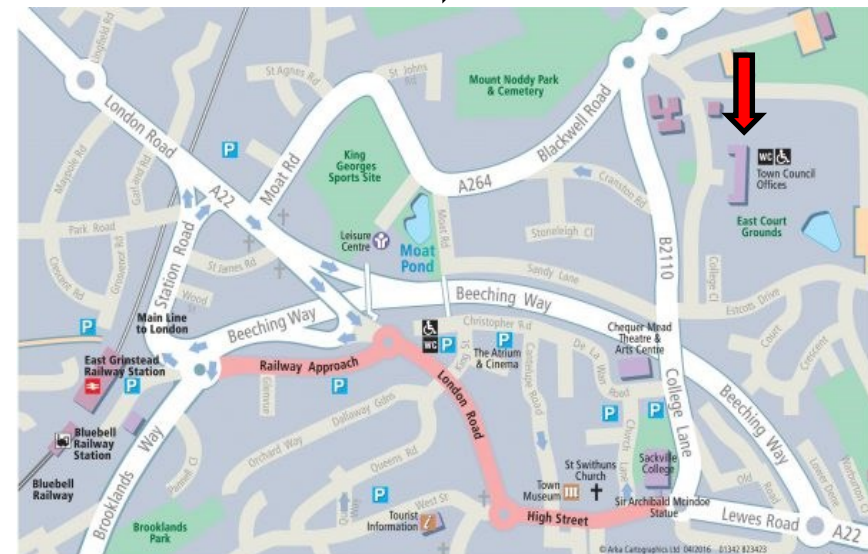
#### Adults

Guiding isn't just for girls. We have about 100,000 adult volunteers and supporters, who find satisfaction and enjoyment in encouraging girls to grow and develop, while having fun.

If you would like to join us, please contact:

[www.girlguiding.org.uk/interested](http://www.girlguiding.org.uk/interested) or call 0800 169 5901

Where to find the Trail: 





# EAST COURT GUIDING CENTENARY NATURE TRAIL

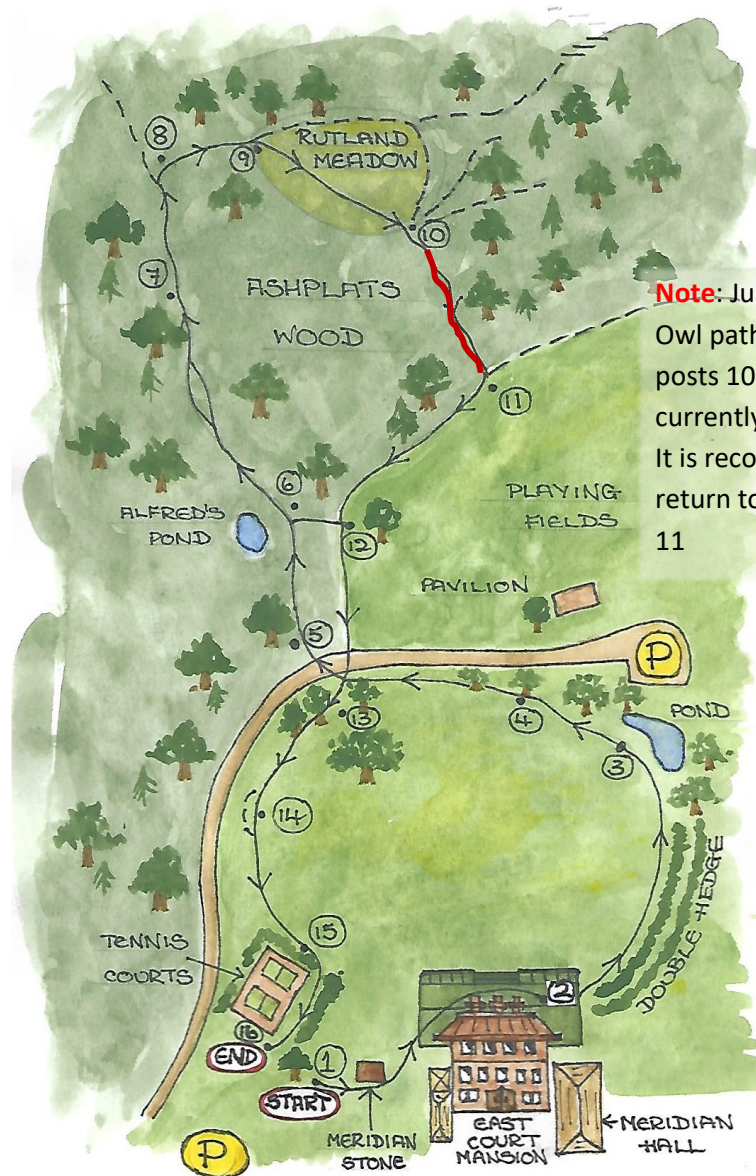


## East Court Mansion

East Court has been a family home for most of its life. It was built in 1769 for newly-weds, John Cranston, a London lawyer, and Catherine Green, on land owned by Catherine's family. During the Second World War it was requisitioned by the Army.

In 1946 The East Grinstead Urban District Council bought the house, terrace and land to the North from Godfrey Williams. The Manor Charitable Trust, of which Alfred Wagg was a director, purchased the remaining land and shortly afterwards it became owned by the East Grinstead War Memorial Company.

The house is now used as offices for East Grinstead Town Council and contains the Mayor's Parlour and rooms which may be hired for community use.



**Note:** July 2024 Owl path between posts 10 & 11 is currently unavailable. It is recommended to return to 6 then 12 & 11



Don't forget the **Country Code** as you follow the Nature Trail !

- Be safe, plan ahead and follow any signs.
- Protect plants and animals and take your litter home.
- Keep dogs under close control.
- Consider other people.

(The full **Country Code** can be found on the internet: [www.naturalengland.org.uk](http://www.naturalengland.org.uk))



Our grateful thanks for their generous support go to:  
East Grinstead War Memorial Trust  
Southern Sheeting  
Ovenden Signs

## How to make a Brass Rubbing

- Cover the plaque on the top of each post with a sheet of paper.
- Hold the paper firmly in place and rub your crayon over the top of the paper.
- Hey presto, a picture will appear !
- Can you collect all 16 pictures ?



## Other ways to use the Trail

- Who can be the first to find out which pictures are on posts **3**, **10** and **14** ?
- Which number posts display bird pictures ? (there are 4 of them)
- How quickly can you run / jog / walk round all 16 posts of the Trail ?
- Which post has a picture of the Bluebell Railway on it ?

**Please use the Trail as much and however you like.  
Enjoy yourselves and have FUN !**